



**COMMANDE ET SIGNALISATION
OPERATING AND SIGNALING SYSTEM**



Sommaire

Contents

Série en applique
Surface mounting range

p.4

Série encastrée
Flush mounting range

p.6

Boîte à boutons sur mesure
Tailor made C.O.P.

p.8

Boîte à boutons cabine étanche, XL et horizontale
C.O.P. waterproof XL range and horizontal

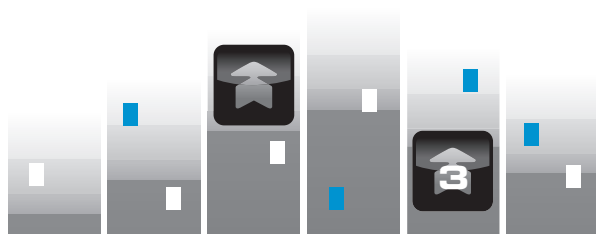
p.10

Composants BlueStyle
BlueStyle components

p.12

Afficheurs
Displays

p.14



Série en applique
Surface mounting range



Colonne cabine en applique
Surface mounting car operating column

Montage des composants en standard ou en anti-vandale.

Finition : inox brossé, thermolaqué, polycarbonate.

Option : chapeau de finition, profils latéraux lumineux ou profils intégrés à l'habillage, finitions diverses.

Standard or vandal resistant mounting assembly.

Finish : brushed stainless steel, powder coating, polycarbonate.

Option : Additional plate, profiles with light (lateral or integrated to the car finishing), various finishing.



Polycarbonate



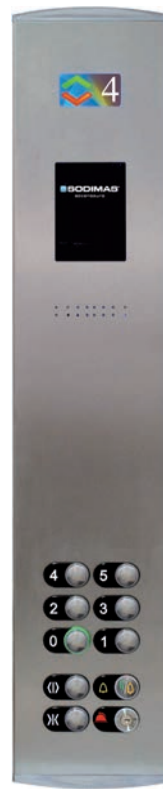
"Palinato"



"Bleu chiné"



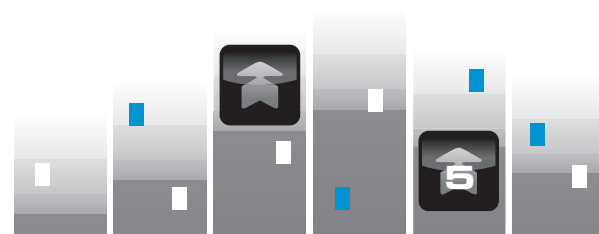
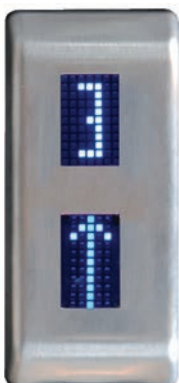
"Brun sablé"



Inox



Plastron palier en applique
Hall fixture surface mounting



Série encastrée

Flush mounting range



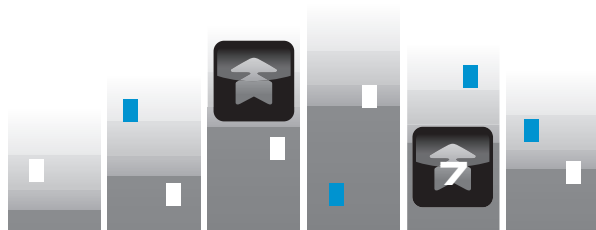
*Plastron cabine encastré
Flush mounting COP*



Montage des composants en standard ou en anti-vandale.
Finition inox brossé.
*Standard or vandal resistant mounting assembly.
Brushed stainless steel finish.*

*Plastron palier encastré
Flush mounting hall push button*

Montage des composants en standard ou en anti-vandale.
Finition inox brossé.
*Standard or vandal resistant mounting assembly.
Brushed stainless steel finishing.*



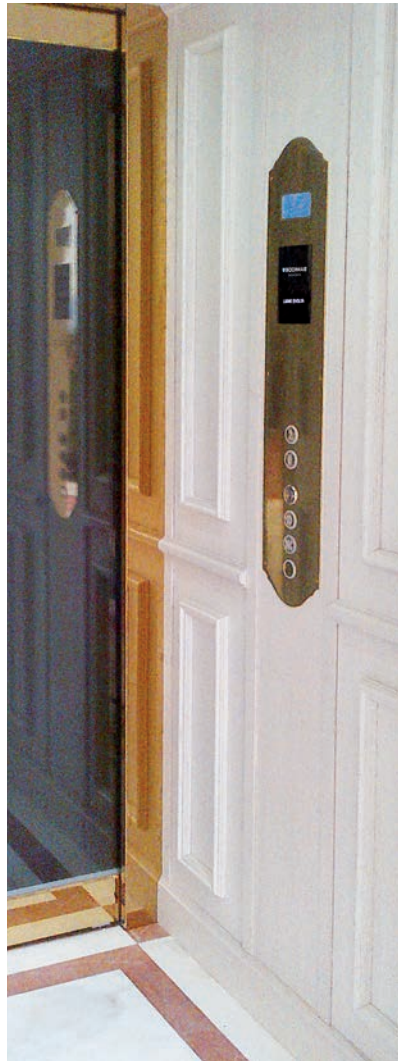


**Boîte à boutons sur mesure
Tailor made C.O.P.**

Colonne inox poli miroir noire
Mirror polished black stainless steel column



Plastron type rétro
 en inox poli miroir or
*Mirror polished stainless steel
 gold color
 front plate "Retro" style*



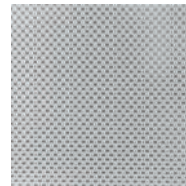
Plastron cabine ou palier
 tous types de formes
*Car or landing face plate
 various shapes available*



(Autres finitions sur demande)
(Others finishings on request)



Inox gravé
Engraved stainless steel



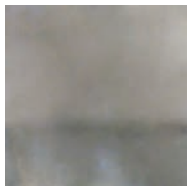
Inox lino
Lino stainless steel



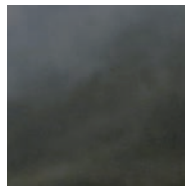
Inox brossé ton or
*Brushed stainless
 steel gold color*



Inox brossé
*Brushed stainless
 steel*



Inox poli miroir chromé
*Mirror polished stainless
 steel chrome color*



Inox poli miroir noir
*Mirror polished stain-
 less steel
 black color*



Inox poli miroir or
*Mirror polished
 stainless steel
 gold color*



**Boîte à boutons cabine cyntra IP54
et horizontal gamme XL**
*C.O.P. cyntra IP54 and Horizontal
XL range*



Plastron cabine horizontal Horizontal COP

Conforme norme 81-70 annexe G.

Finition inox brossé.

Montage des composants standard ou en anti-vandale.

Complies with 81-70 standards appendice G.

Brushed stainless steel finish.

Standard or vandal-resistant components mounting.



Plastron palier applique Surface mounting hall push button

Conforme norme 81-70 annexe G.

Finition inox brossé.

Complies with 81-70 standards appendice G.

Brushed stainless steel finish.

Plastron cabine encastré Flush mounting COP

Conforme norme 81-70 annexe G - Finition inox brossé

Ensemble étanche IP54 avec boîtier de protection arrière.

Montage des composants standard ou en anti-vandale

Complies with 81-70 standards appendice G - Brushed stainless steel finish

Set IP54 protection waterproof with rear box.

Standard or vandal-resistant components mounting.

Plastron palier encastré Flush mounting hall push button

Conforme norme 81-70 annexe G - Finition inox brossé

Ensemble étanche IP54 avec boîtier de protection arrière.

Montage des composants standard ou en anti-vandale

Complies with 81-70 standards appendice G - Brushed stainless steel finish

Set IP54 protection waterproof with rear box.

Standard or vandal-resistant components mounting.



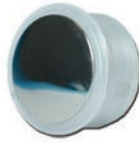
EVOLYA

Colerette relief en braille
Braille ring relief



SYNIA

Repère noir ou chrome indépendant en relief
Black or chrome identification plate independent relief



Version standard - bouton Angel
Standard version - Angel button



Version anti-vandale 81-71 (type 2) - bouton Démon
Vandal resistant 81-71 standards (type 2) - Démon button

CYNTRA

Bouton inox brossé et inox brossé
ton or
Brushed stainless steel and brushed
stainless steel gold button

CYNTRA IRS4

Bouton braille + relief
Braille button + relief

CYNTRA XL

Bouton braille grande taille
Braille button large size



Ø 30,8 mm



Ø 39 mm



Ø 56 mm

Options

Contact à clé
Key contact



Version standard
Standard version



Version anti-vandale
81-71 (type 2)
Vandal resistant 81-71
standards (type 2)

Prédisposition canon européen
Predisposition European key



Bouton Tumbler
Tumbler button



Module micro + HP cabine
Micro + HP unit



Digicode
Digicode



Afficheurs Displays



Afficheur 2" / Display 2"

Afficheur à points bleu
Blue points display

Dimensions affichage: 45x28 mm
Size display



Afficheur 3" / Display 3"

Programmable via USB / *Programmed by USB*

Gongs multi-tons / *Gongs multi-tones*

Dimensions affichage / *Size display* : 47x71 mm



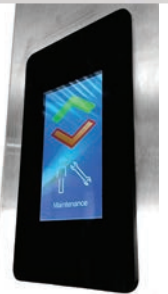
Afficheur 4" / Display 4"

Programmable via USB ou WIFI / *Programmed by USB or WIFI*

Gongs multi-tons / *Gongs multi tone*

Synthèse vocale intégrée / *Integrated voice synthesis*

Dimensions affichage *Size display* : 53x85 mm



Afficheur 7" / Display 7"

Programmable via mini USB/sd ou WIFI / *Programmed by mini USB/SD or WIFI*

Gongs multi-tons / *Gongs multi tone*

Synthèse vocale intégrée / *Integrated voice synthesis*

Option: tactile / *Option: Touch-sensitive screen*

Plaque de charge intégré / *Integrated load plate*

Dimensions affichage *Size display* : 90x150 mm

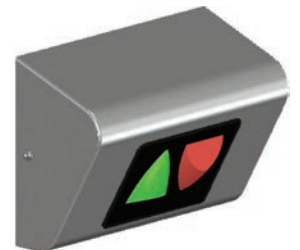


Flèches / Arrows

Module flèche pour montant cabine
Arrow module for amount car



Fèches de sens multi-led en relief
Multi-led in relief direction arrows



Logos afficheurs / Logotype



Maintenance
Maintenance

Accès interdit
Out of service

Surcharge
Overload

Complet
Full load

Pompier
Fireman

Liftier
Lift attendant

Cellule
Photocell

Fermeture forcée
Door close

Mode secours
Emergency mode

Code
Code

www.SODIMAS®.com



Siège social / Head office

11 rue Ampère
26600 Pont de l'Isère
FRANCE

☎ +33(0)4 75 84 86 00

☎ +33(0)4 75 84 67 30

e-mail : accueil@sodimas.fr

27 000 006



FABRICATION FRANCAISE

