

Commande et signalisation Operating and signaling system

 **SODIMAS®**

ascenseurs



EN 81.70

 **BlueStyle**
by SODIMAS

Sommaire

Contents

Série en applique
Surface mounting range

p.4

Série encastrée
Flush mounting range

p.6

Boîte à boutons sur mesure
Tailor made C.O.P.

p.8

Boîte à boutons cabine étanche, XL et horizontale
C.O.P. waterproof XL range and horizontal

p.10

Composants BlueStyle
BlueStyle components

p.12

Afficheurs
Displays

p.14



Série en applique
Surface mounting range



Colonne cabine en applique
Surface mounting car operating column

Montage des composants en standard ou en anti-vandale.

Finition : inox brossé, thermolaqué, polycarbonate.

Option : chapeau de finition, profils latéraux lumineux ou profils intégrés à l'habillage, finitions diverses.

Standard or vandal resistant mounting assembly.

Finish : brushed stainless steel, powder coating, polycarbonate.

Option : Additional plate, profiles with light (lateral or integrated to the car finishing), various finishing.



Plastron palier en applique
Hall fixture surface mounting



Série encastrée

Flush mounting range



*Plastron cabine encastré
Flush mounting COP*



Montage des composants en standard ou en anti-vandale.
Finition inox brossé.

*Standard or vandal resistant mounting assembly.
Brushed stainless steel finish.*

*Plastron palier encastré
Flush mounting hall push button*

Montage des composants en standard ou en anti-vandale.
Finition inox brossé.

*Standard or vandal resistant mounting assembly.
Brushed stainless steel finishing.*



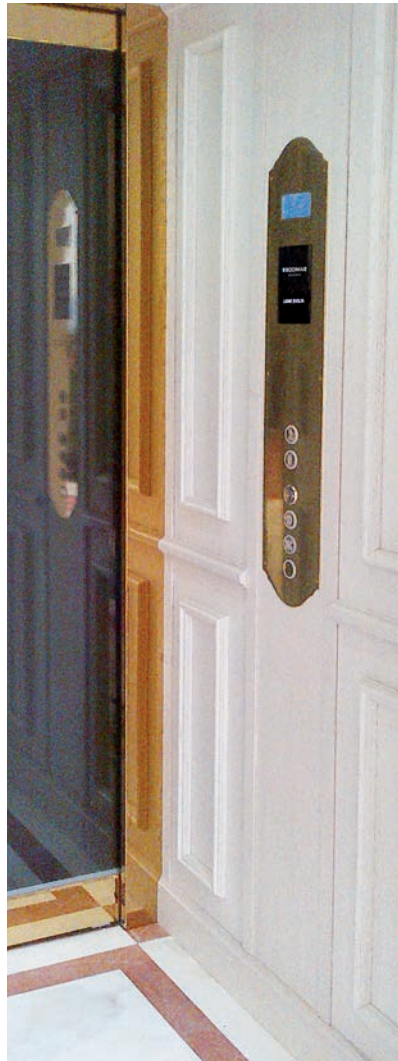


**Boîte à boutons sur mesure
Tailor made C.O.P.**

Colonne inox poli miroir noire
Mirror polished black stainless steel column



Plastron type rétro
 en inox poli miroir or
*Mirror polished stainless steel
 gold color
 front plate "Retro" style*



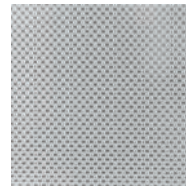
Plastron cabine ou palier
 tous types de formes
*Car or landing face plate
 various shapes available*



(Autres finitions sur demande)
(Others finishings on request)



Inox gravé
Engraved stainless steel



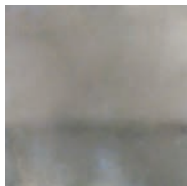
Inox lino
Lino stainless steel



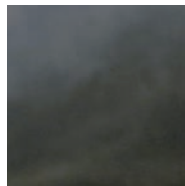
Inox brossé ton or
*Brushed stainless
 steel gold color*



Inox brossé
*Brushed stainless
 steel*



Inox poli miroir chromé
*Mirror polished stainless
 steel chrome color*



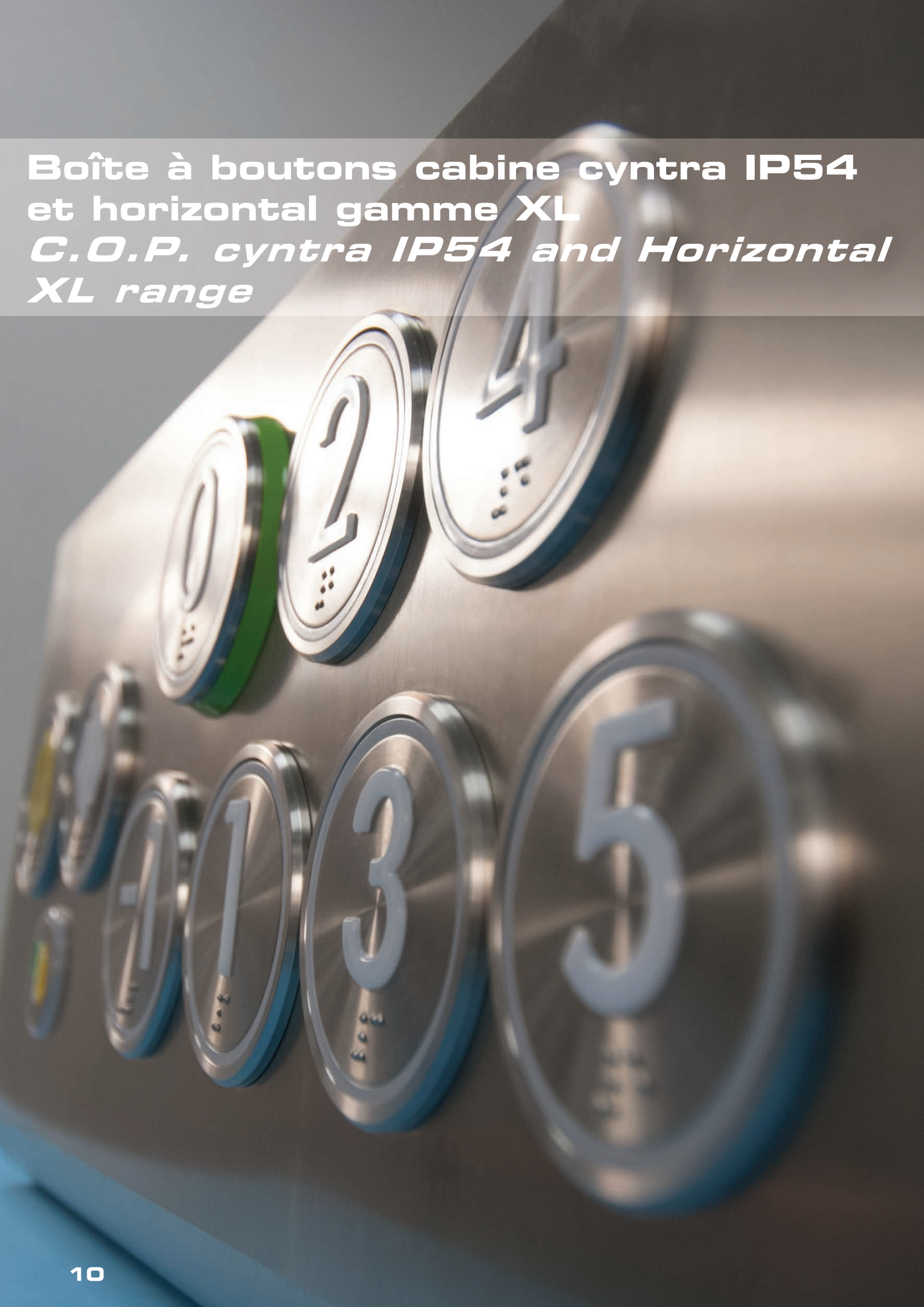
Inox poli miroir noir
*Mirror polished stain-
 less steel
 black color*



Inox poli miroir or
*Mirror polished
 stainless steel
 gold color*



**Boîte à boutons cabine cyntra IP54
et horizontal gamme XL**
*C.O.P. cyntra IP54 and Horizontal
XL range*



Plastron cabine horizontal Horizontal COP

Conforme norme 81-70 annexe G.

Finition inox brossé.

Montage des composants standard ou en anti-vandale.

Complies with 81-70 standards appendice G.

Brushed stainless steel finish.

Standard or vandal-resistant components mounting.



Plastron palier applique Surface mounting hall push button

Conforme norme 81-70 annexe G.

Finition inox brossé.

Complies with 81-70 standards appendice G.

Brushed stainless steel finish.

Plastron cabine encastré Flush mounting COP

Conforme norme 81-70 annexe G - Finition inox brossé

Ensemble étanche IP54 avec boîtier de protection arrière.

Montage des composants standard ou en anti-vandale

Complies with 81-70 standards appendice G - Brushed stainless steel finish

Set IP54 protection waterproof with rear box.

Standard or vandal-resistant components mounting.

Plastron palier encastré Flush mounting hall push button

Conforme norme 81-70 annexe G - Finition inox brossé

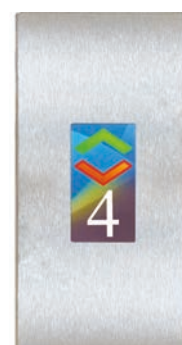
Ensemble étanche IP54 avec boîtier de protection arrière.

Montage des composants standard ou en anti-vandale

Complies with 81-70 standards appendice G - Brushed stainless steel finish

Set IP54 protection waterproof with rear box.

Standard or vandal-resistant components mounting.



Composants BlueStyle BlueStyle components



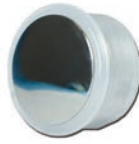
EVOLYA

Colerette relief en braille
Braille ring relief



SYNIA

Repère noir ou chrome indépendant en relief
Black or chrome identification plate independent relief



Version standard - bouton Angel
Standard version - Angel button



Version anti-vandale 81-71 (type 2) - bouton Démon
Vandal resistant 81-71 standards (type 2) - Démon button

CYNTRA

Bouton inox: brossé, ton or, noir
Brushed stainless: steel, gold and black button

CYNTRA IRS4

Bouton braille + relief
Braille button + relief

CYNTRA XL

Bouton braille grande taille
Braille button large size



Ø 30,8 mm



Ø 39 mm



Ø 56 mm

Options

Contact à clé
Key contact



Version standard
Standard version



Version anti-vandale
81-71 (type 2)
Vandal resistant 81-71
standards (type 2)

Prédisposition canon européen
Predisposition European key



Bouton Tumbler
Tumbler button



Module micro + HP cabine
Micro + HP unit



Digicode
Digicode



Afficheurs Displays



Afficheur Led / Led Display

Afficheur à points / segments bleu

Blue dot / segment display

Dimensions niveaux: 30 mm

Size levels

Dimensions flèches: 40 mm

Size arrows



Afficheur TFT 3" / Display 3"

Programmable via USB / Programmed by USB

Gongs multi-tons / Gongs multi-tones

Dimensions écran affichage / Size display : 47x71 mm



Afficheur TFT 4" / Display 4"

Programmable via USB ou WIFI / Programmed by USB or WIFI

Gongs multi-tons / Gongs multi tone

Synthèse vocale intégrée / Integrated voice synthesis

Dimensions écran affichage Size display : 53x85 mm



Afficheur TFT 7" / Display 7"

Programmable via mini USB/sd ou WIFI / Programmed by mini USB/SD or WIFI

Gongs multi-tons / Gongs multi tone

Synthèse vocale intégrée / Integrated voice synthesis

Option: tactile / Option: Touch-sensitive screen

Plaque de charge et instructions intégrées / All integrated instructions inside

Dimensions écran affichage Size display : 90x150 mm



Flèches / Arrows

Module flèche pour montant cabine
Arrow module for amount car



Flèches de sens multi-led en relief
Multi-led in relief direction arrows



Logos afficheurs / Logotype



Maintenance	Accès interdit	Surcharge	Complet	Pompier	Liftier	Cellule	Fermeture forcée	Mode secours	Code
Maintenance	Out of service	Overload	Full load	Fireman	Lift attendant	Photocell	Door close	Emergency mode	Code



ascenseurs

Création SODIMAS 09/2017 - 27 000 006 - Photos et illustrations non contractuelles. Sous réserve de modifications. Reproduction, même partielle, interdite.
Created by SODIMAS 09/2017 - 27 000 006 - Photos and illustrations are not contractual. Modifications without prior notice. Speechless reproduction even partial.



Fabriqué en France
Made in France



www.SODIMAS.com

Siège social

Head office

11 rue Ampère
26600 Pont de l'Isère
FRANCE

+33(0)4 75 84 86 00

e-mail: accueil@sodimas.fr